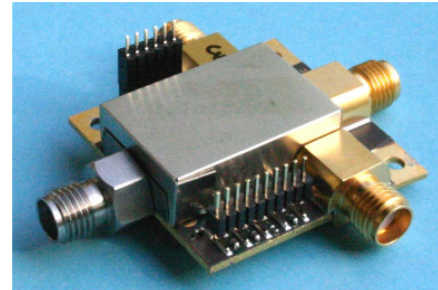


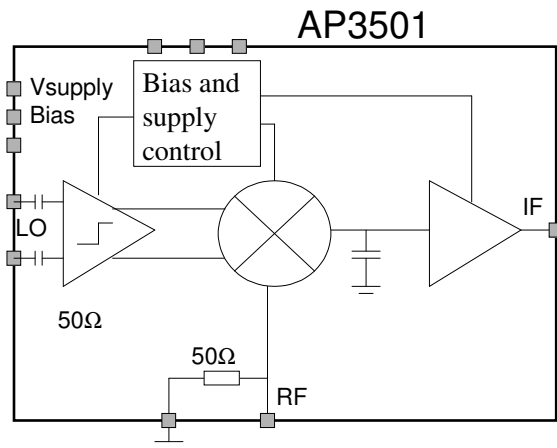
Component Product Brief

35 GHz Bandwidth Sampler AP3501

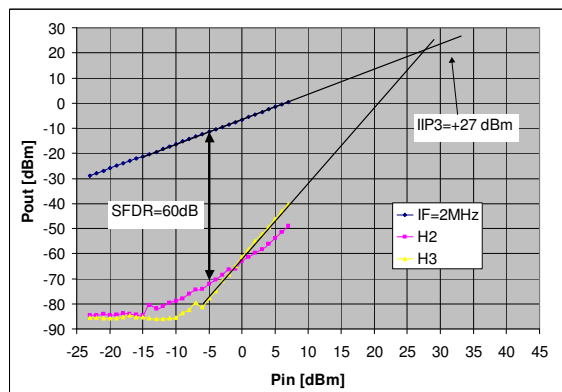
The AnaPico AP3501 is a highly integrated 35 GHz bandwidth sampler featuring up to 600 MSamples/s sampling rate. The AP3501 is available in a compact package and enables high-speed sampling with minimum additional components.



Equivalent circuit



Measured performance



Harmonic distortion ($f_{RF}=5.002$ GHz,
 $f_{LO}=500$ MS/s, $V_{LO}=1.0$ V_{pp}).

Features

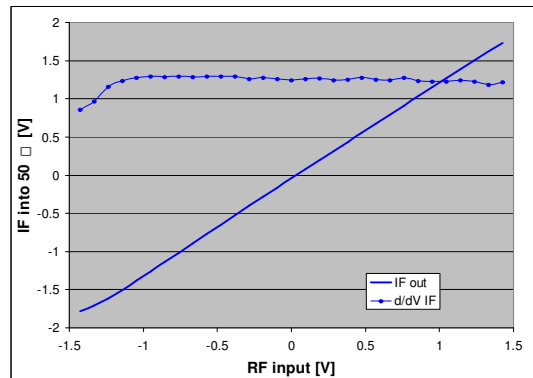
- Voltage conversion gain: ≈ 1
- Available in other package options (SMD) and die
- High Integration (strobe pulse generation, pre- post amplification)
- ECL-compatible strobe input signal

Specifications

- 35 GHz -3 dB bandwidth
- ± 1 V linear input range (1% linearity)
- 60 dB SFDR
- High sampling rates (>500 MS/s)
- >40 dB RF to IF isolation
- <0.5 mV_{rms} noise (150 MHz IF BW)
- Power consumption: <2 W

Applications

- Equivalent time sampling
- Down-sampling receivers
- Sampling frequency converters



DC response and linearity